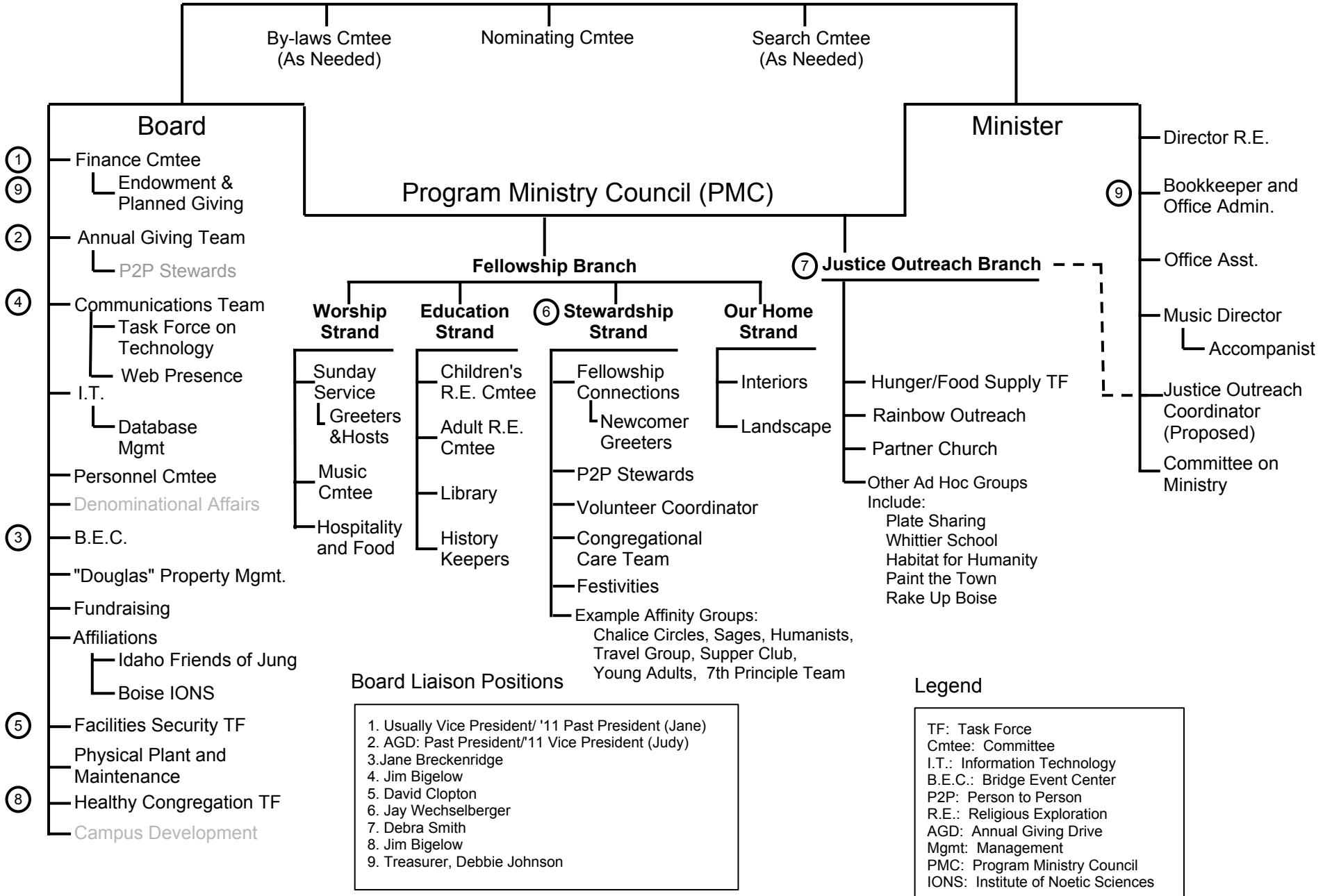


# Congregation

Updated January 22, 2012



## Board Liaison Positions

1. Usually Vice President/ '11 Past President (Jane)
2. AGD: Past President/'11 Vice President (Judy)
3. Jane Breckenridge
4. Jim Bigelow
5. David Clopton
6. Jay Wechselberger
7. Debra Smith
8. Jim Bigelow
9. Treasurer, Debbie Johnson

## Legend

- TF: Task Force  
 Cmtee: Committee  
 I.T.: Information Technology  
 B.E.C.: Bridge Event Center  
 P2P: Person to Person  
 R.E.: Religious Exploration  
 AGD: Annual Giving Drive  
 Mgmt: Management  
 PMC: Program Ministry Council  
 IONS: Institute of Noetic Sciences